

CORPORATE PRESENTATION

*25th Santander Andean Conference
August 2024*



Member of
Dow Jones
Sustainability Indices
Powered by the S&P Global CSA



ABOUT US

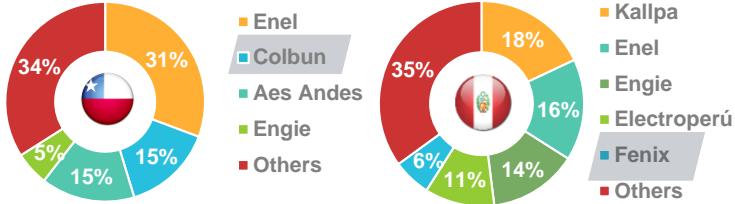
COLBUN AT A GLANCE



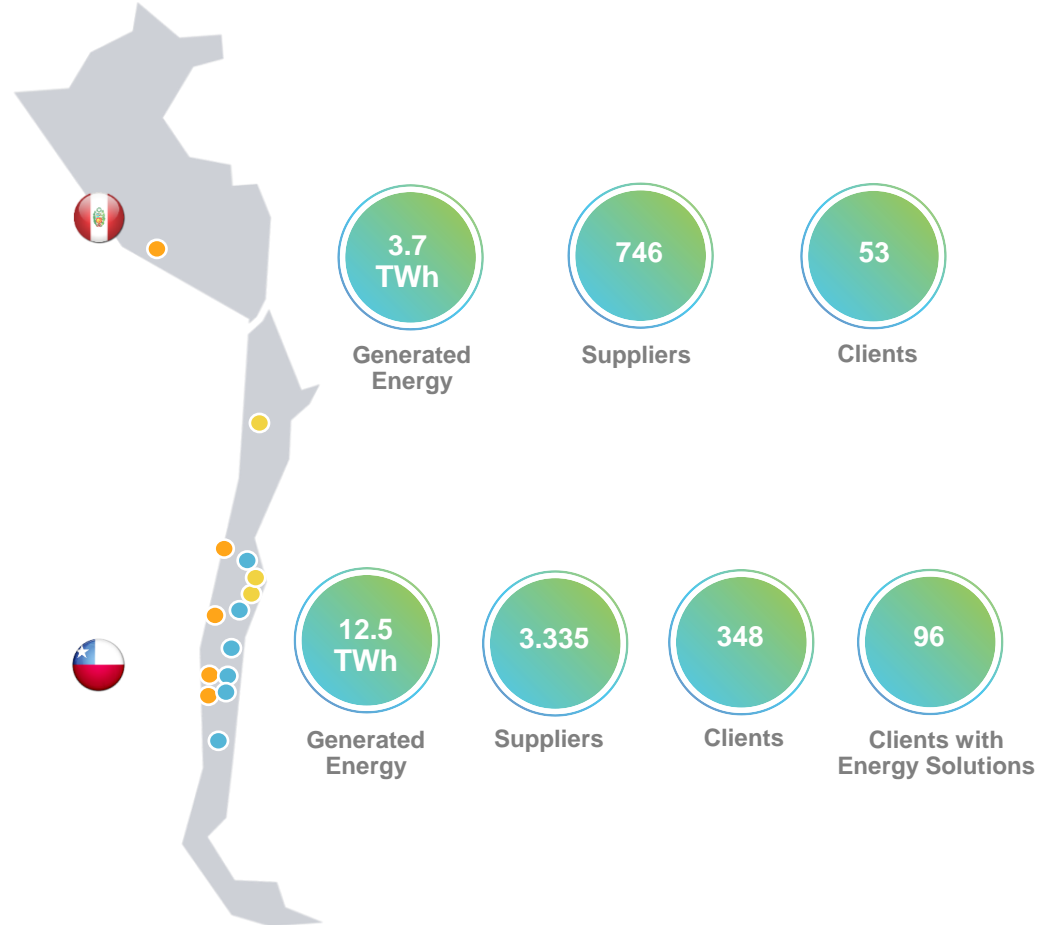
INSTALLED CAPACITY (%)



MARKET SHARE ¹



OWNERSHIP (%)



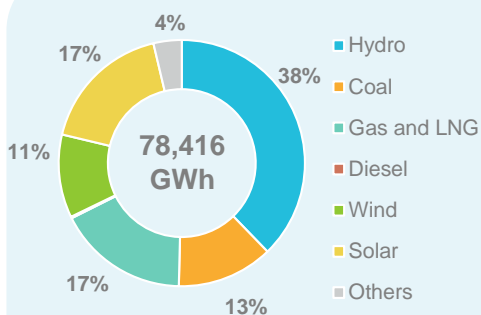
Note: Figures as of Jun24.
¹ Note: In terms of generation.

INSTALLED CAPACITY GW

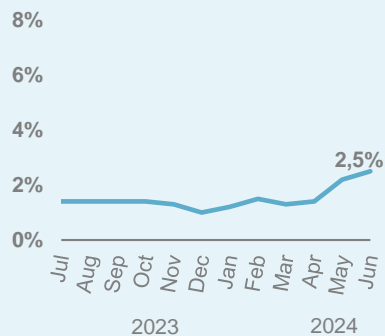


SEN
35 GW
+ 5.0% y/y

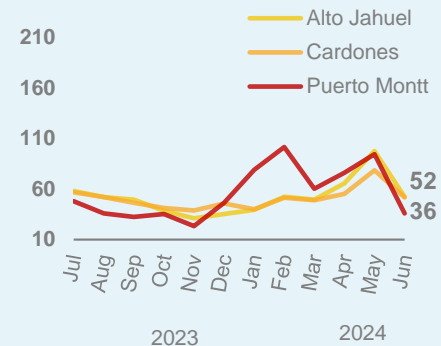
LTM GENERATION GWh



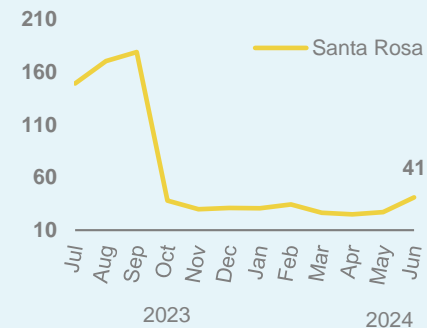
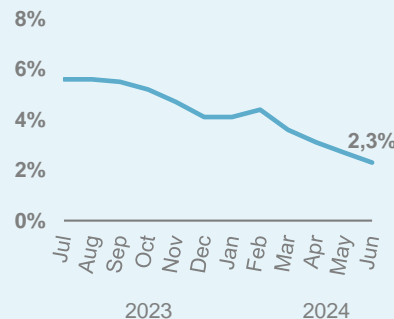
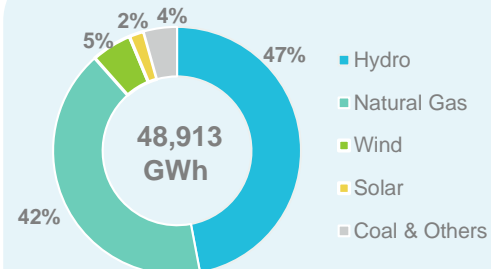
DEMAND GROWTH 12 months average %



MARGINAL COST US\$/MWh



SEIN
14 GW
+ 4.7% y/y

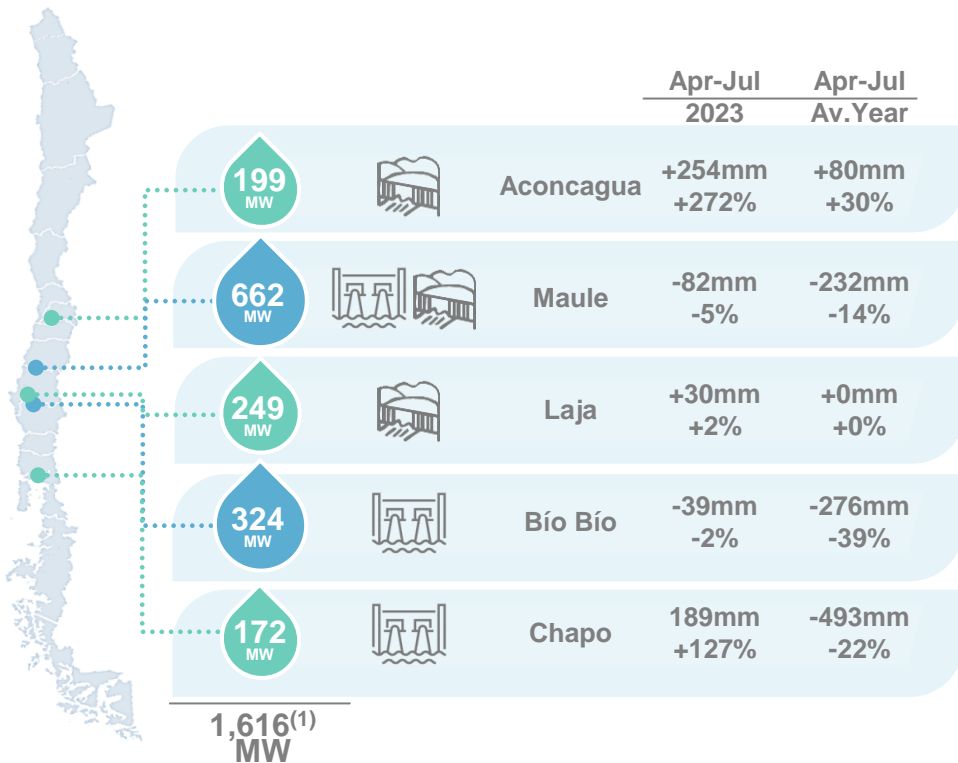


MARKET CONDITIONS

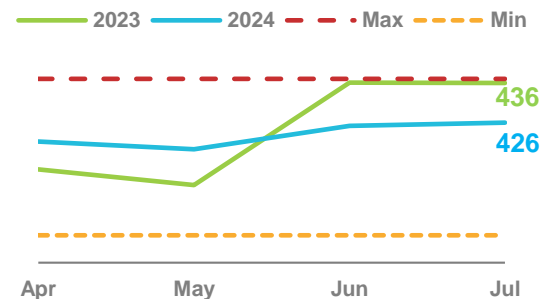
HYDROLOGICAL CONDITIONS IN CHILE



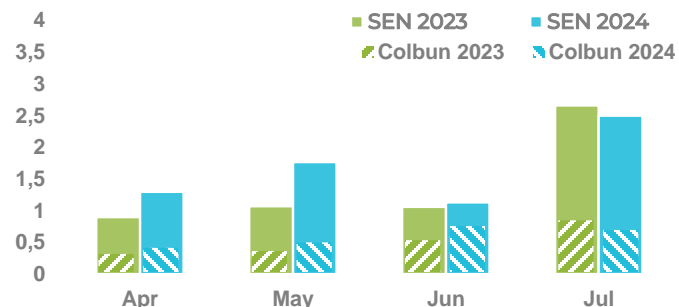
ACCUMULATED RAINFALLS APR-JUL 2024 COMPARISON (mm)



COLBUN RESERVOIR LEVEL (m.a.s.l)



HYDROELECTRIC GENERATION (TWh)



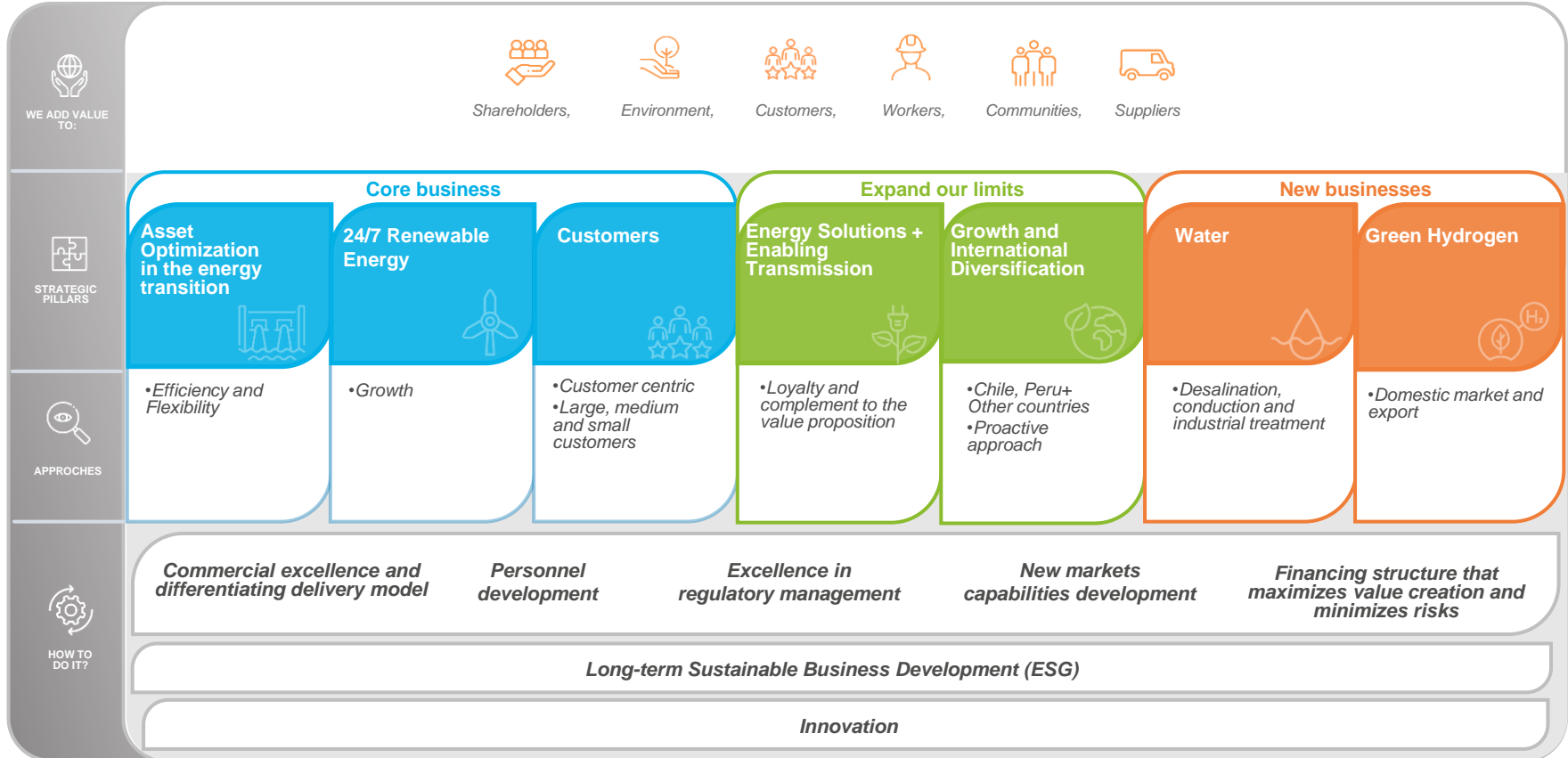
TOTAL (TWh)	Apr-Jul 2023	Apr-Jul 2024	Var (%)
SEN	6.3	8.2	30%
COLBUN	2.0	2.3	15%

Note: All figures as of Jul24.

¹ Note: Also considers Carena hydroelectric plant with an installed capacity of 10 MW.

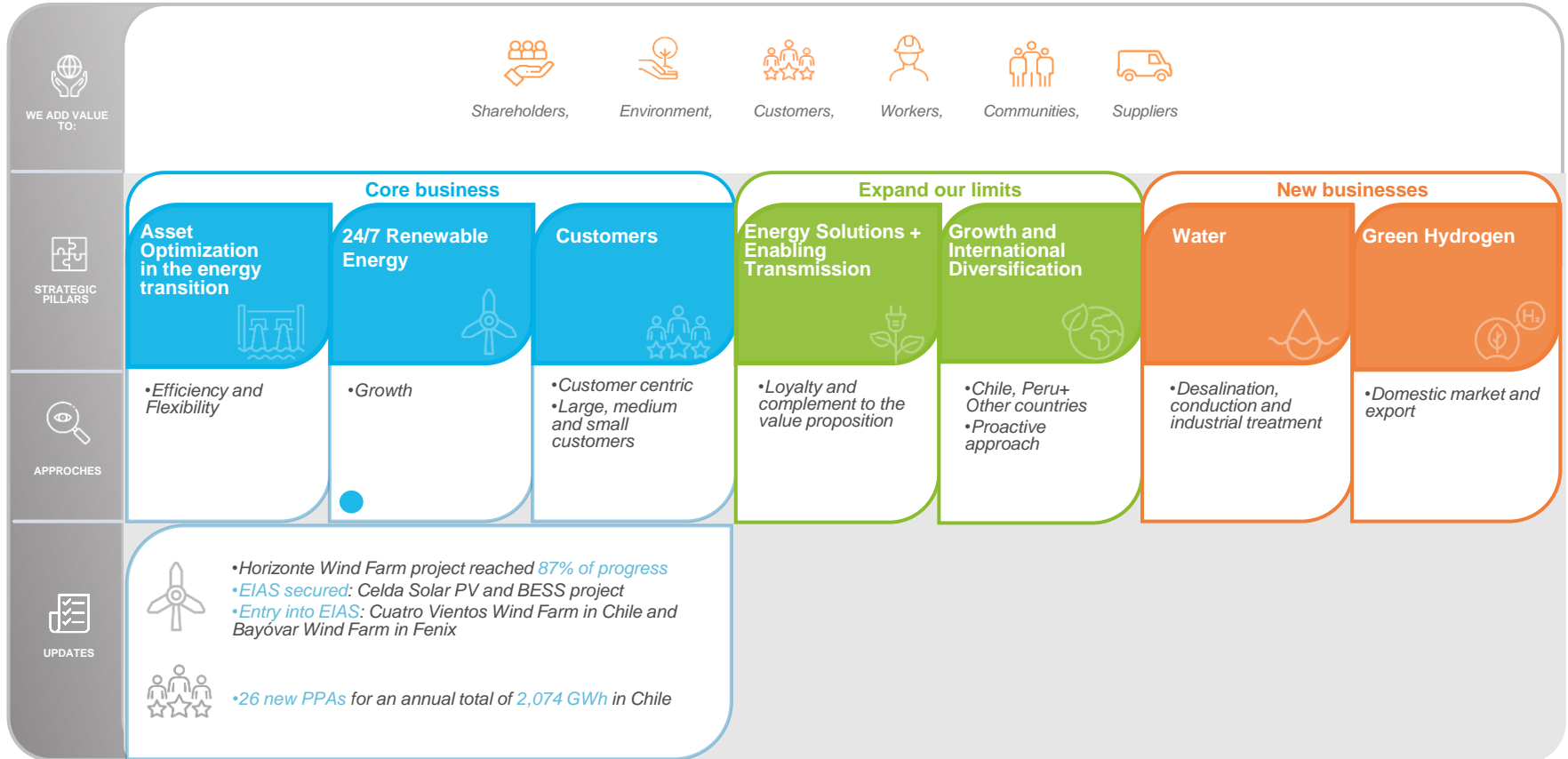
STRATEGIC AGENDA UPDATE

WE TRANSFORM ENERGY, IN BALANCE WITH THE PLANET, TO BOOST YOUR PROJECTS AND DREAMS



STRATEGIC AGENDA UPDATE

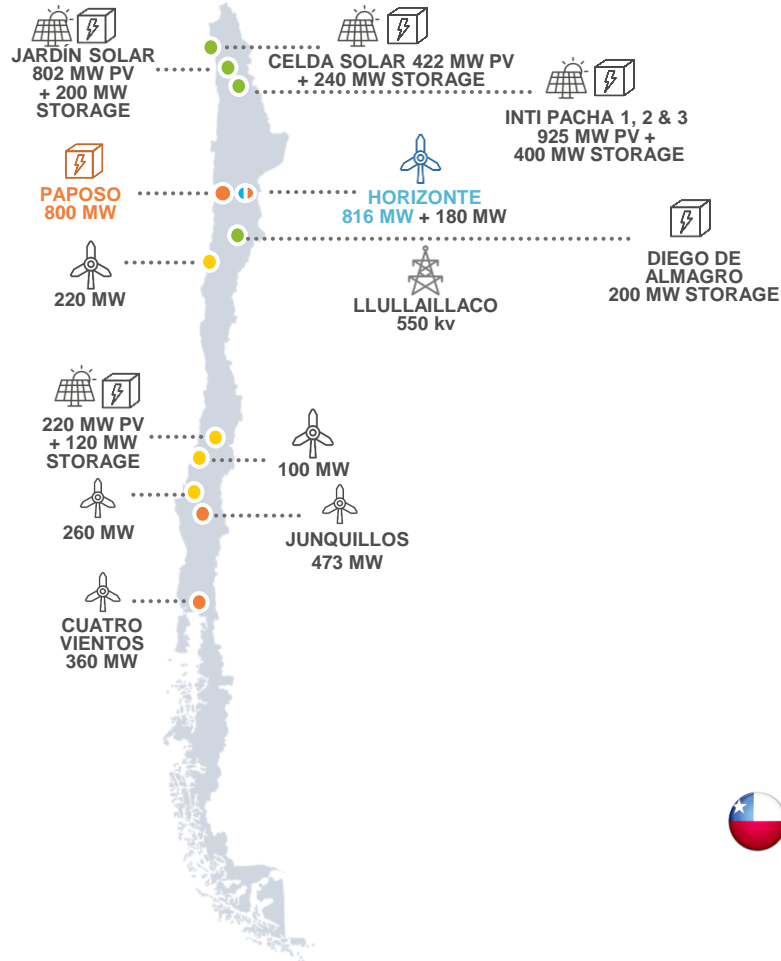
WE TRANSFORM ENERGY, IN BALANCE WITH THE PLANET, TO BOOST YOUR PROJECTS AND DREAMS



Note: All this figures as of Jun24.

STRATEGIC AGENDA UPDATE

CHILE - PIPELINE OF PROJECTS



LAST QUARTER UPDATE

- ✓ The Company entered **Paposo Pump Storage** project into the Environmental Assessment System
- ✓ **Horizonte Wind Farm Project** reached 87% progress, with 33 wind turbines energized, which have added 21 GWh of energy



PROGRESS STAGE

● 920 MW Preliminary studies	● 1,813 MW + 550kv Feasibility	● 3,189 MW Environmentally approved
● 816 MW Construction		

2.4 GW	2.4 GW	1.9 GW
--------	--------	--------

Note: Figures considers maximum installed capacity allowed for each project as of Jun24.

STRATEGIC AGENDA UPDATE

HORIZONTE WIND FARM



2Q24

● 87% total progress



94 turbines reached mechanical completion

Out of 140 each with 5.83 MW of installed capacity

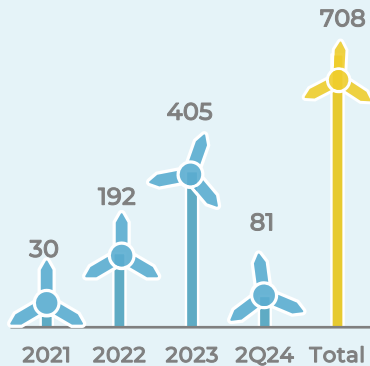


33 turbines energized

Added 21 GWh of energy to the National Electrical System



CAPEX (US\$ million)



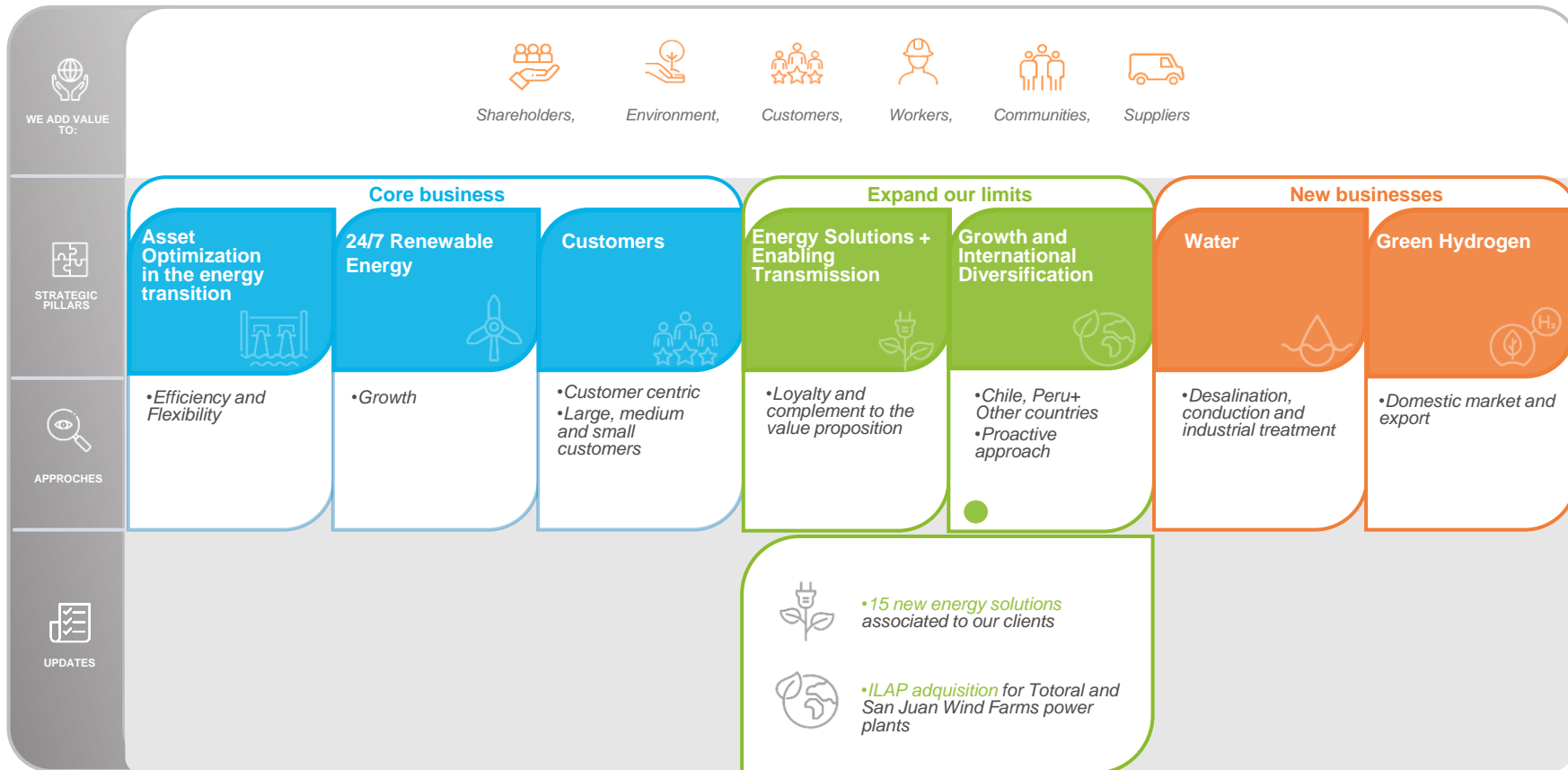
1Q25

Estimated commissioning


Note: All this figures as of Jun24.


STRATEGIC AGENDA UPDATE

WE TRANSFORM ENERGY, IN BALANCE WITH THE PLANET, TO BOOST YOUR PROJECTS AND DREAMS





Note: All this figures as of Jun24.

 **ACQUIRED ASSETS**





239 MW + 64 MW
Wind Farms ⁽¹⁾ San Juan Expansion

 **TRANSACTION**



US\$401 mm
Transaction Price ⁽²⁾

 **CONTRACTED PPAs**



642 GWh
Annual Contracted Energy



¹ Note: Considers San Juan (193 MW) and Totoral (42 MW) wind farms.

² Note: May experience variations due to the application of the adjustments stipulated in the contract, which are customary for this type of transactions.



SAN JUAN



Installed Capacity	193.2 MW
Historic Annual Generation	518 GWh
Location	III Region, Freirina
COD	Mar-2017



TOTAL



Installed Capacity	46 MW
Historic Annual Generation	78 GWh
Location	IV Region, Canela
COD	Jan-2010



REVENUES 2023
US\$ 76 mm



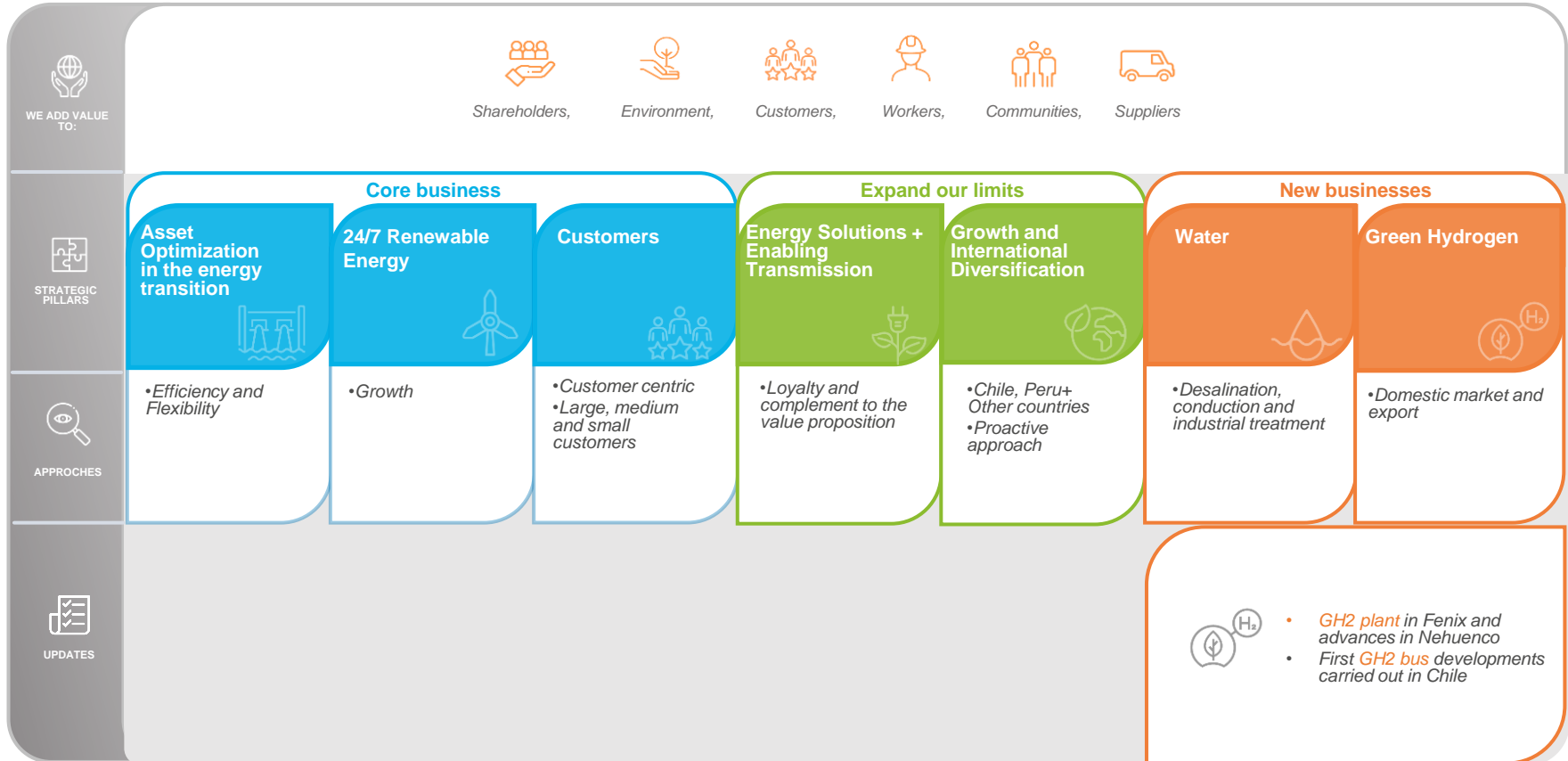
EBITDA 2023
US\$20 mm



NET INCOME 2023
(US\$26 mm)

STRATEGIC AGENDA UPDATE

WE TRANSFORM ENERGY, IN BALANCE WITH THE PLANET, TO BOOST YOUR PROJECTS AND DREAMS



Note: All this figures as of Jun24.

- ✓ This document provides information about Colbun S.A. In no case this document constitutes a comprehensive analysis of the financial, production and sales situation of the company
- ✓ To evaluate whether to purchase or sell securities of the company, the investor must conduct its own independent analysis
- ✓ This presentation may contain forward-looking statements concerning Colbun's future performance and should be considered as good faith estimates by Colbun S.A
- ✓ In compliance with the applicable rules, Colbun S.A. publishes on its Web Site (www.colbun.cl) and sends the financial statements of the Company and its corresponding notes to the Comisión para el Mercado Financiero, those documents should be read as a complement to this presentation

INVESTOR RELATIONS TEAM CONTACT



Soledad Errázuriz
serrazuriz@colbun.cl
+ (56) 2 24604450



Isidora Zaldívar
izaldivar@colbun.cl
+ (56) 2 24604380



Macarena Güell
mguell@colbun.cl
+ 56 2 24604084

